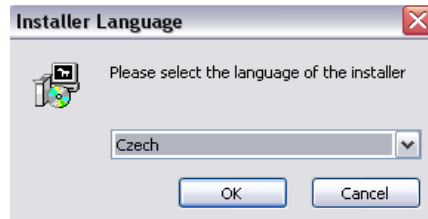
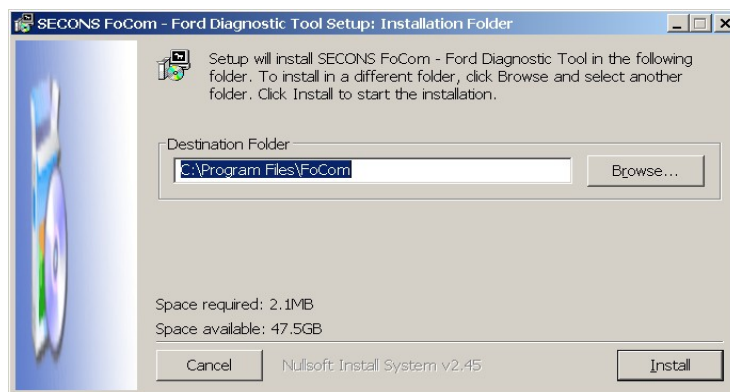


## FCOM software and drivers installation

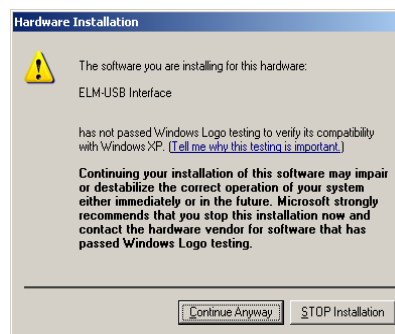
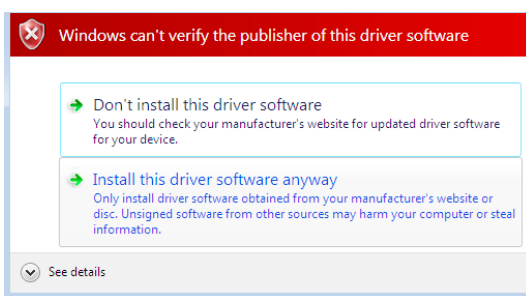
1. Insert attached CD to your CD-ROM.
2. Run installation file FCOMSetup.exe
3. Choose language of installer



4. Choose your destination folder for FCOM



FCOM interface drivers are automatically updated during FCOM installation. When prompted to install „unsigned“ drivers, click on „Install this driver software anyway“ (Microsoft® Windows® 7) or „Continue Anyway“ (Microsoft® Windows® XP. ).



Microsoft® Windows® will automatically install drivers when you plug-in the FCOM interface to USB port.

You should not be connected to a vehicle until now.

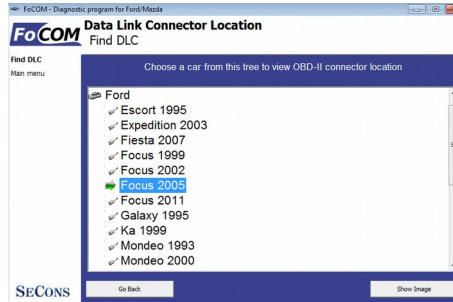
---

Please note: all program files (including updates) and documentation is available on enclosed CD-ROM or downloadable from [www.obdtester.com/downloads](http://www.obdtester.com/downloads).

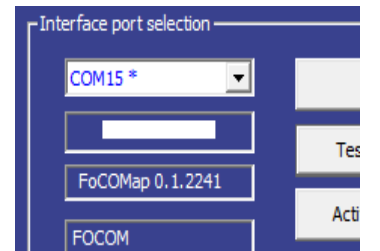
Before using FCOM please read carefully user manual and our diagnostics wiki at [www.DiagWiki.com](http://www.DiagWiki.com).

# Connect FCOM to the vehicle – starting with diagnosis

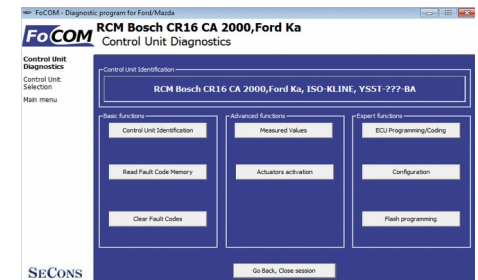
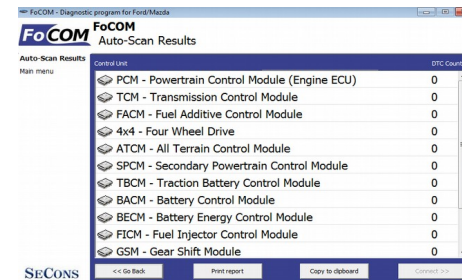
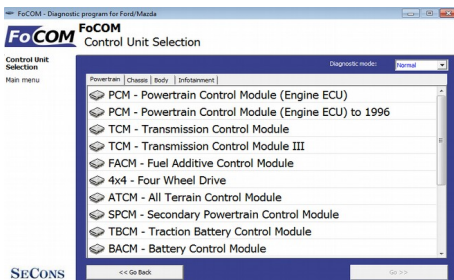
1. Connect the FCOM interface to your computer. LED indicator should start blinking.
2. Connect FCOM to OBD-II connector in the vehicle.  
If you cannot find location of the OBD-II connector, you can use FCOM location image database, available under *OBD-II Connector location* from main menu:



3. Set-up FCOM application
4. Select *Settings* from FCOM main menu and configure FCOM interface port. If no ports are shown, click *Refresh* button. Then choose appropriate port and click on *Test Interface* to make sure everything is OK. You should see updated interface information then.



Now your computer is ready to connect to a vehicle. You can use either direct control unit selection (available from main menu), or perform “autoscan”, which will list all control units present in the vehicle.



## Unrecognized control unit

Every control unit has to be uniquely identified. Unfortunately some control units do not provide full identification (mostly pre-2000 ECUs). If you see “Unrecognized ECU” message shown on right hand side, it means control unit either did not return complete identification or this control unit is not yet implemented. **This does not mean control unit diagnosis is impossible, you can continue by selecting appropriate control unit from the list of possible control units.**

*In order to improve the FCOM, we will be glad if you can provide information about unsupported control units.*

*FCOM has “Save ECU Information” function that automatically save all required information to a file. Please send these files to [support@secons.com](mailto:support@secons.com), information you provide will be included in new FCOM versions.*

If you encounter any difficulties, please do not hesitate to contact us at [support@secons.com](mailto:support@secons.com) or call us at +420 222 743 723 or +1 360-469-0472 (operated from Europe).

