

OBDTester and ELM-USB Quick Start Guide

www.obdtester.com – www.secons.com – support@secons.com

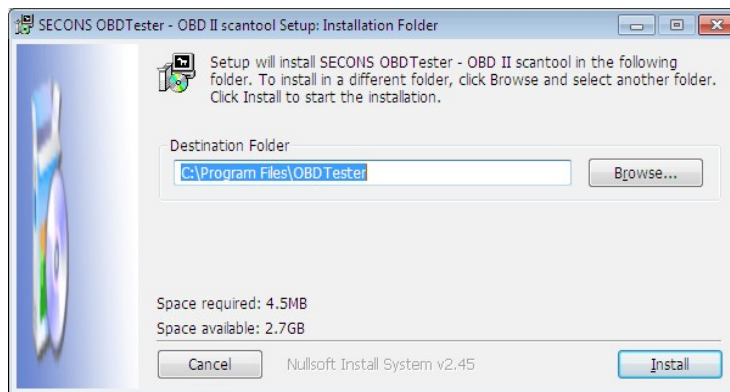


OBDTester software and drivers installation

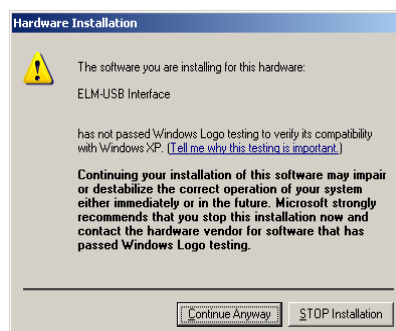
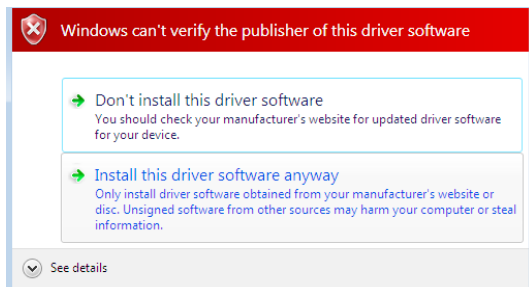
1. Insert attached CD to your CD-ROM.
2. Run installation file OBDTesterSetup.exe
3. Choose language of installer



4. Choose your destination folder for OBDTester



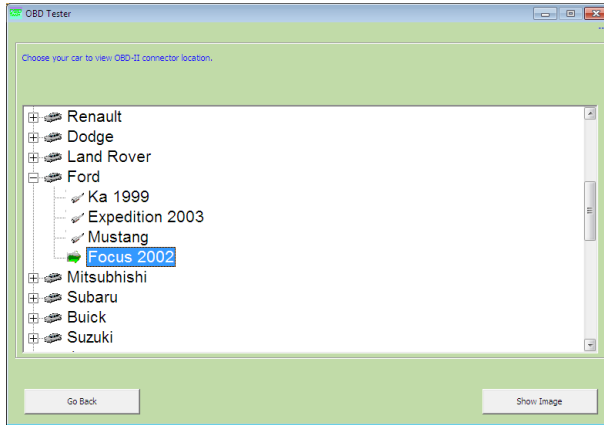
ELM-USB drivers are automatically updated during OBDTester installation. When prompted to install „unsigned“ drivers, click on „Install this driver software anyway“ (Microsoft® Windows® 7) or „Continue Anyway“ (Microsoft® Windows® XP.).



Microsoft® Windows® will automatically install drivers when you plug-in the ELM-USB to USB port.

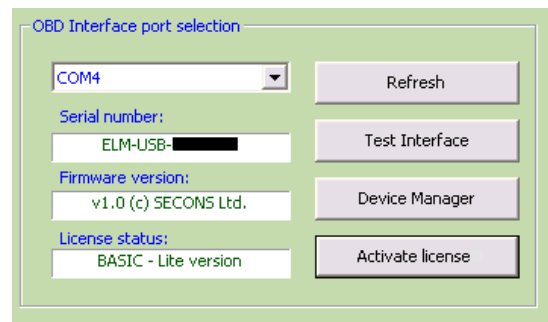
Connect ELM-USB to the vehicle

1. Connect the ELM-USB to your computer. LED indicator should light green.
2. Connect ELM-USB to OBD-II connector in the vehicle.
If you cannot find location of the OBD-II connector, you can use OBDTester location image database, available under *Lookup OBD-II location* from main menu:



3. Set-up OBDTester application

Select *Settings* from OBDTester main menu and configure ELM-USB port. After click *Refresh* button OBDTester should find port to which is ELM-USB connected. Choose these port. Click *Test Interface* to make sure everything is OK, you should see fulfilled *Serial number* and *License status* box.



If you've purchased OBDTester PROFESSIONAL license, please click on *Activate license* button to open activation window and update your license. You have to save settings (or *Apply* button) by clicking on *Save* button before activation process. In the activation window click *Download* button (you have to be connected to the Internet) to automatically download the license data from our server. You will see license data in *Activation* box). Alternatively you can copy and paste license data into editing area. Then save and activate the license by clicking on *Activate* button. You will be notified if the activation was successful.

Some functions of OBDTester are limited without PROFESSIONAL license. If you didn't buy it with your ELM-USB interface, you can do it anytime on-line at <http://www.obdtester.com/order> or push *Get license* button.

4. Save settings and return to main menu.
5. Turn ignition ON, but don't start an engine.
6. Push button *Connect to OBD-II car*.
OBD-II interface starts connecting to vehicle and LED indicator starts blinking orange.
7. You are ready to use diagnostic functions now.

