

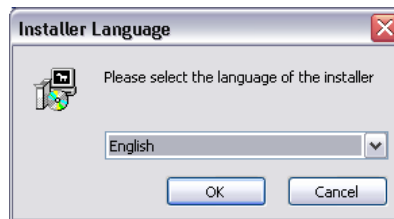


# ToCOM Quick Start Guide

[www.obdtester.com/tocom](http://www.obdtester.com/tocom) – [www.secons.com](http://www.secons.com) – [support@secons.com](mailto:support@secons.com)

## ToCOM software and drivers installation

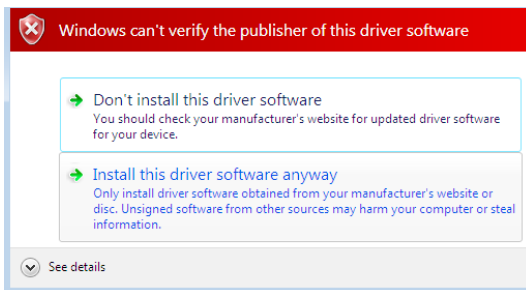
1. Insert attached CD to your CD-ROM.
2. Run installation file “ToCOMSetup.exe”
3. Choose language of installer



4. Choose your destination folder for ToCOM



ToCOM interface drivers are automatically updated during ToCOM installation. When prompted to install „unsigned“ drivers, click on „Install this driver software anyway“ (Microsoft® Windows® 7) or „Continue Anyway“ (Microsoft® Windows® XP. ).

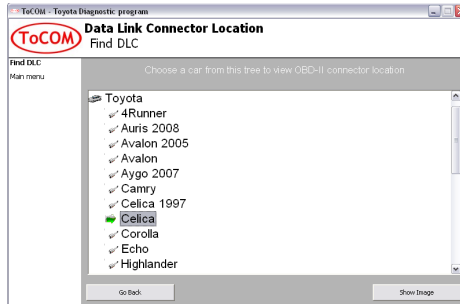


Microsoft® Windows® will automatically install drivers when you plug-in the ToCOM interface to USB port. You should not be connected to a vehicle until now.

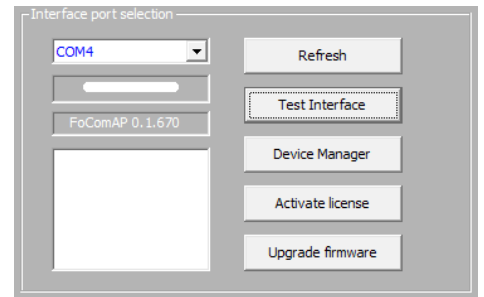
 Please note: all program files (including updates) and documentation is available on enclosed CD-ROM or downloadable from [www.obdtester.com/downloads](http://www.obdtester.com/downloads).

# Connect ToCOM to the vehicle – starting with diagnosis

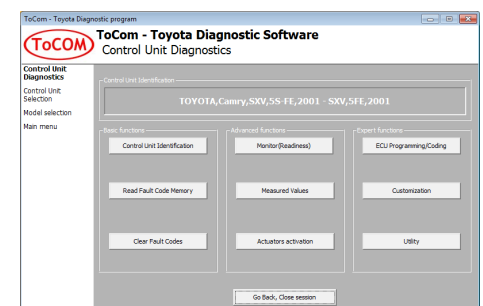
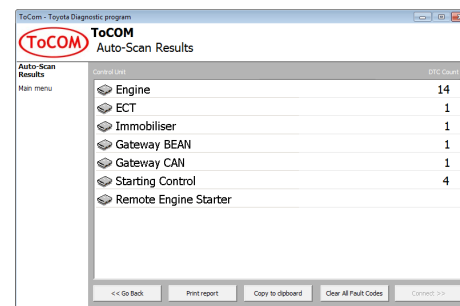
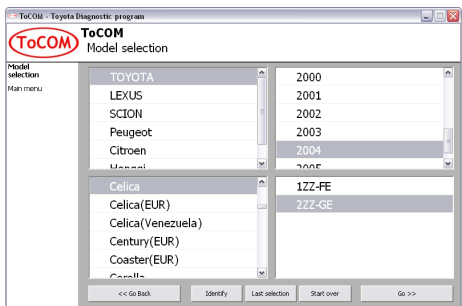
1. Connect ToCOM interface to your computer. LED indicator should start blinking.
2. Connect ToCOM to OBD-II connector in the vehicle.  
If you cannot find location of the OBD-II socket, you can use ToCOM location image database, available under *OBD-II Connector location* in main menu:



3. Set-up ToCOM application
4. Select *Settings* in ToCOM main menu and configure ToCOM interface port. If no ports are shown, click on *Refresh* button. Then choose appropriate port and click on *Test Interface* to make sure everything is OK. Then you should see updated interface information. Now click on *Apply changes* or *Save changes* button to save changes and return to main menu.



Now the system is ready to connect to control units. In main menu, you can use either direct control unit selection (by clicking on *Select Control unit* button), or perform *Auto-scan*, which will list all control units present in the vehicle. Before you get to choosing the control units, you must enter exact vehicle model. Year and engine type must be selected, otherwise diagnosis may fail.



## Reporting bugs and improvement requests

In case you encounter to failure of any program functions (eg fault codes reading/clearing, coding functions, connecting to ECU, test interface, ...), please, prepare the following data: (more information in user manual)

- Vehicle description (VIN code, model, manufacture year, motorization)
- ECU snapshot (“Control Unit Identification” → “Save ECU information”)
- Debug log (save it after operation failure in “Settings” → “Save Debug”)

Detailed description of problem and required data above please send us at [support@secons.com](mailto:support@secons.com)

If you encounter any other difficulties, please do not hesitate to contact us at [support@secons.com](mailto:support@secons.com) or call us at +420 222 743 723 or +1 360-469-0472 (operated from Europe).