

Configuration of Ford ECUs

<http://www.obdtester.com/focom>

This is PRELIMINARY WORKING DRAFT for SECONS Ltd. internal use and FoCOM users.
Please excuse the typos and errors.

Each control unit in Ford vehicles contains configuration data as hexadecimal chain. In these data are encoded information from the production, which specifies the functions and equipment of the vehicle. Configuration data can be read from the control unit, or from AS-BUILT database of Ford Motor Company.



Note: These data of configuration doesn't contain encoding of injectors function, traveled distance, or informations about immobilizer, and other. Is necessary to perform adaptation of these data, after changing the ECU separately.

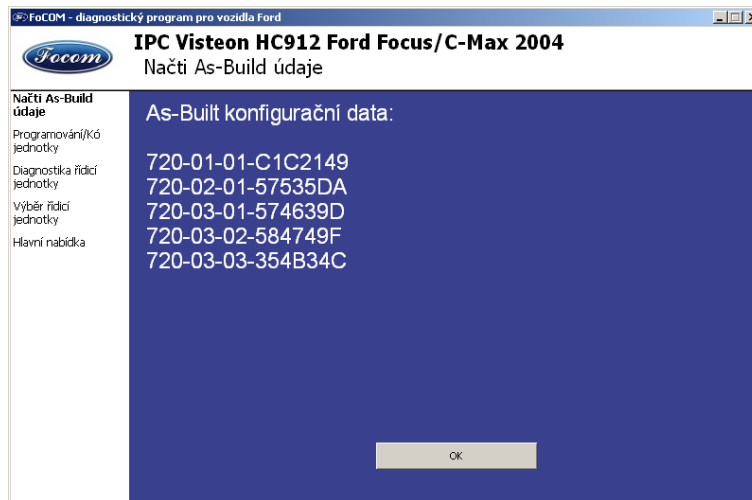


Note: Ford IDS doesn't display readed data, just program the data to new ECU.

Display of data from the AS-BUILT database of the Ford Motor Company (includes data for all controls)

	PCM Module			BCE Modules			
PCM 1	FFFF	FFFF	0310	7A6-01-01	0900	20B0	20A8
PCM 2	2C0C	44FF	FE8B	7A6-01-02	00B0		
PCM 3	FFFF	03FF	2F42	7A6-02-01	02B2		
PCM 4	FFFF	FFFF	FF0F	720-01-01	6A20	3930	A8C4
PCM 5	FFFF	FFFF	FF10	720-01-02	0100	2B	
PCM 6	FFFF	FFFF	FF11	726-01-01	5A0A	93	
PCM 7	FFFF	FFFF	FF12	726-02-01	03C0	2222	0037
PCM 8	FFFF	FFFF	FF13	726-03-01	3000	61	
PCM 9	FFFF	FFFF	FF14	726-04-01	0E40		
				726-05-01	040F	46	
				726-06-01	0000	34	
				726-07-01	2505	5F	
				726-08-01	0101	023A	
				726-09-01	2000	57	
				726-10-01	8008	0000	00C6
				726-10-02	0000	0000	003F
				726-10-03	0000	0000	0040
				726-10-04	0000	41	
				726-11-01	1400	53	

Display of data from the FoCOM (only for one selected control unit):



For programming of configuration data you need to write line by line.