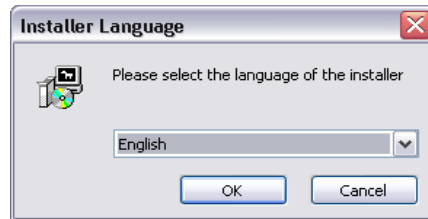
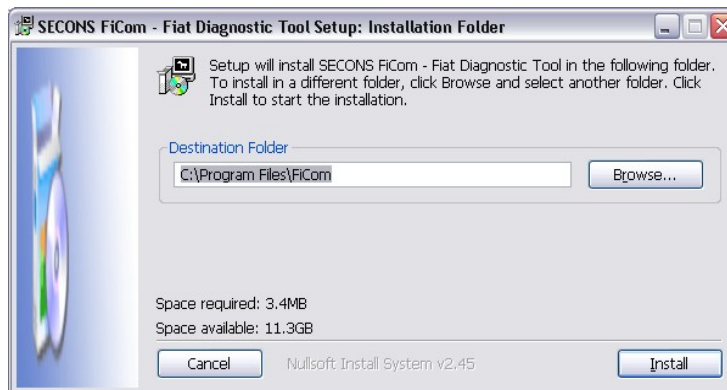


FiCOM software and drivers installation

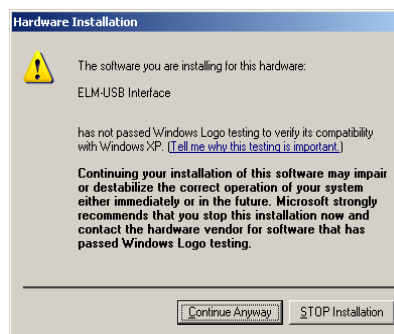
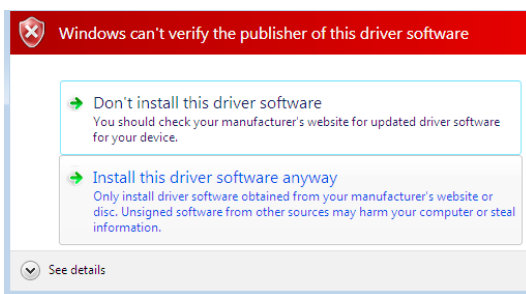
1. Insert attached CD to your CD-ROM.
2. Run installation file FiCOMSetup.exe
3. Choose language of installer



4. Choose your destination folder for FiCOM




FiCOM interface drivers are automatically updated during FiCOM installation. When prompted to install „unsigned“ drivers, click on „Install this driver software anyway“ (Microsoft® Windows® 7) or „Continue Anyway“ (Microsoft® Windows® XP.).



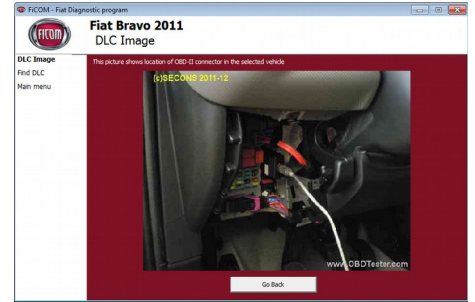
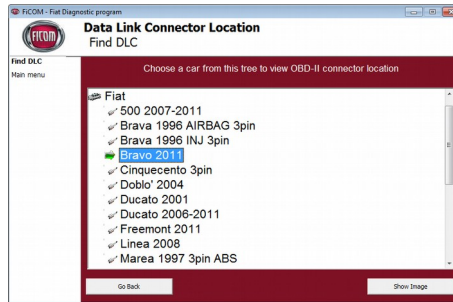
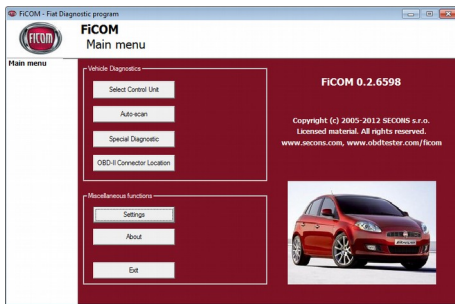
Microsoft® Windows® will automatically install drivers when you plug-in the FiCOM interface to USB port.

You should not be connected to a vehicle until now.

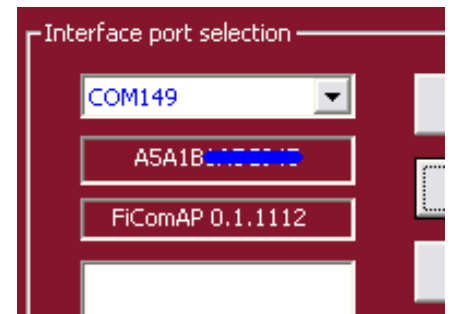
 Please note: all program files (including updates) and documentation are available on enclosed CD-ROM or downloadable from www.obdtester.com/downloads.

Connect FiCOM to the vehicle – starting with diagnosis

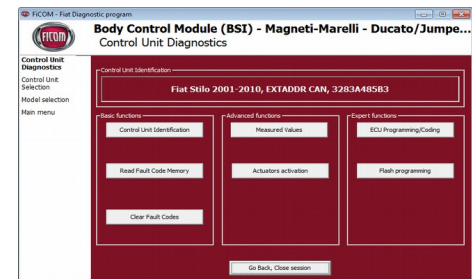
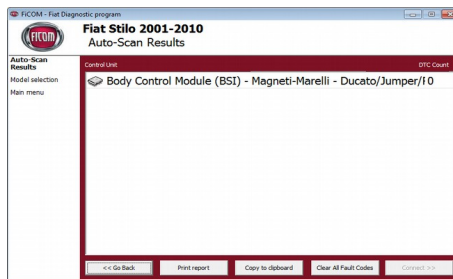
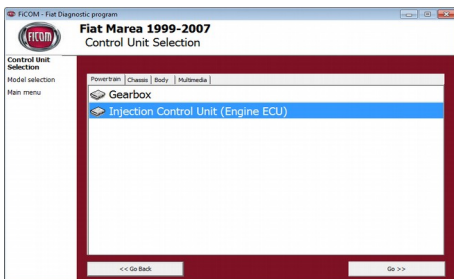
1. Connect the FiCOM interface to your computer. LED indicator should start blinking.
2. Connect FiCOM to OBD-II connector in the vehicle.
If you cannot find location of the OBD-II connector, you can use FiCOM location image database, available under *OBD-II Connector location* from main menu:



3. Set-up FiCOM application
4. Select *Settings* from FiCOM main menu and configure FiCOM interface port. If no ports are shown, click *Refresh* button. Then choose appropriate port and click on *Test Interface* button to make sure everything is OK. Then you should see updated interface information. Now click on *Apply changes* or *Save changes* button to save changes and return to main menu.



Now your computer is ready to connect to control units. In main menu, you can use either direct control unit selection (by clicking on *Select Control Unit* button), or perform *Auto-scan*, which will list all control units present in the vehicle, after model selection.



If you encounter any difficulties, as in exceptional cases with unrecognized control unit, please do not hesitate to contact us at support@secons.com or call us at +420 222 743 723 or +1 360-469-0472 (operated from Europe).