

## FiCOM control unit / car configuration

Applies to vehicles equipped with Body Control Module (BSI).



This is PRELIMINARY WORKING DRAFT for SECONS Ltd. internal use and FiCOM users.  
*Please excuse the typos and errors.*

### Table of Contents

<u>Control unit configuration</u> .....	2
<u>Proxi Alignment configuration</u> .....	2
<u>Configuration</u> .....	3
<u>Transfer configuration from body control module</u> .....	3

## Control unit configuration

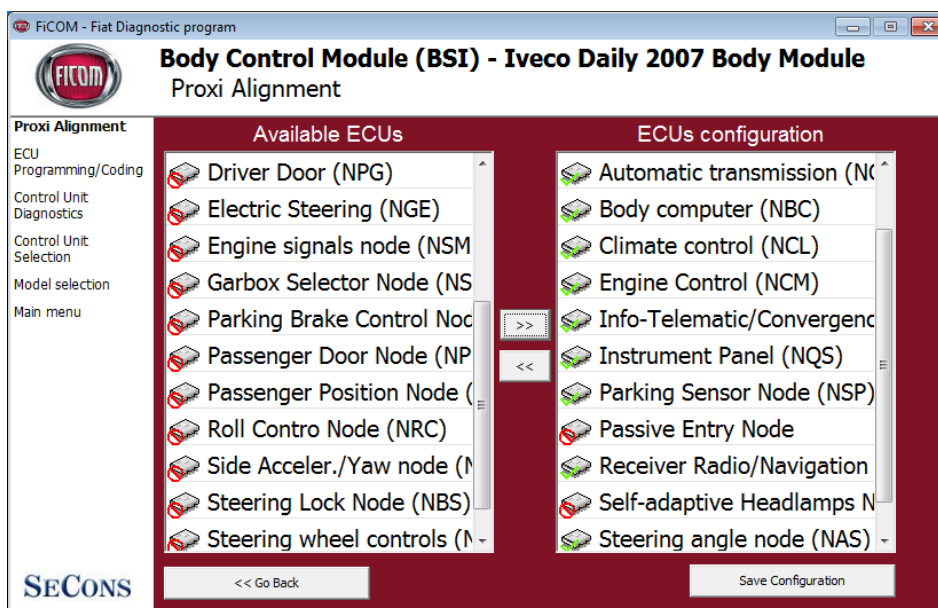
Car configuration is centrally stored in Body Control Module (BSI). Before writing new configuration, please store original settings. We recommend you to save snapshot(s) that includes relevant data (you can save snapshot in Control Unit Identification by clicking on “Save ECU Information” button). Appropriate configuration procedure for replaced control units is described in sections below.

### Proxi Alignment configuration

It is necessary to define the replaced control unit to the configuration of Body Control Module (BSI).

For this purpose, use Proxi alignment function that can be found in “ECU Programming/Coding menu” of Body Control Module (BSI).

You can see 2 columns containing lists of ECUs after you run the Proxi alignment:

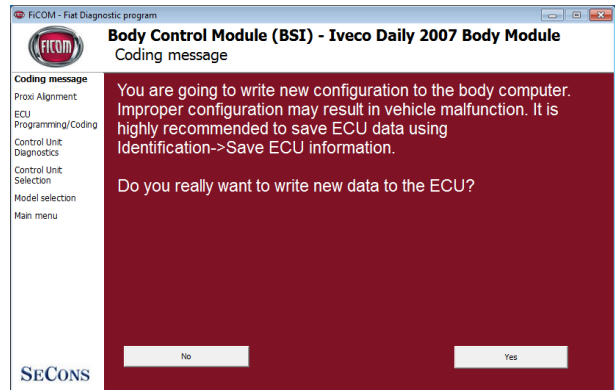


Already installed control units are shown with green mark in the “ECUs configuration” column on the right. You can remove them by selecting them and clicking on the left arrow.

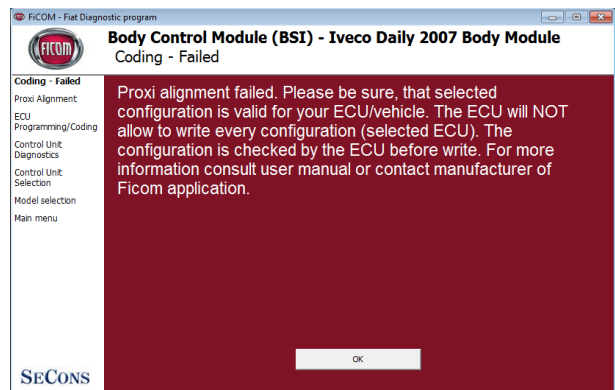
From the list of available ECUs on the left, please select and add control units you wish to install by clicking on the right arrow.

Click on “Save configuration” button.

The following message will be displayed and needs to be confirmed.



Body Control Module may reject write request if new data are not valid for the car (e.g. engine control unit not defined in Body Control Module).



## Configuration

Configuration will be soon added for BSI in one of future updates. It will allow you e.g. to change flashing interval of directional lights, set speed limiter, etc.

## Transfer configuration from body control module

It is necessary to transfer new configuration from BSI to related ECU. For this purpose use "Transfer configuration from body control module" function. You can find it in "ECU Programming / Coding" menu of all control units except the BSI from which is the configuration transferred. Configuration transfer is required in following cases:

1. After replacing the ECU

*Configuration from BSI have to be transferred to the replaced control unit (after performing Proxi alignment in BSI).*

2. After reconfiguration of Body Control Module (BSI)

*In such case is necessary to transfer configuration from BSI to all control units in the vehicle*